

Leading Telecom Company - India

3D Building data for Line of Sight Analysis in Telecom

Keywords

- In telecom networking, the most important parameter for location of the signal towers are the building density data i.e. Line of Sight Analysis.
- The height of the building causes obstruction and loss of signal over a distance in urban areas.
- A digital city model is very helpful in planning the installation of signal towers.
- The high resolution imageries are used to capture 3D building polygons.
- 3D Visualization of the model created.

Results

- Path Profile and Line of Sight reports
- View shed analysis
- Reports can be exported any other formats.

For More information



India office:

Annova Technologies Pvt Ltd
Ground Floor, Turning Point
Complex,
Greenlands, Hyderabad, AP 500073
Phone : +91-40-23737013

US office:

Annova Inc.
591 Camino de la Reina, Suite 200,
San Diego, CA 92108
Phone : +1-858-300-5513
Fax : +1-858-408-1997
Email: annova@annova-tech.com

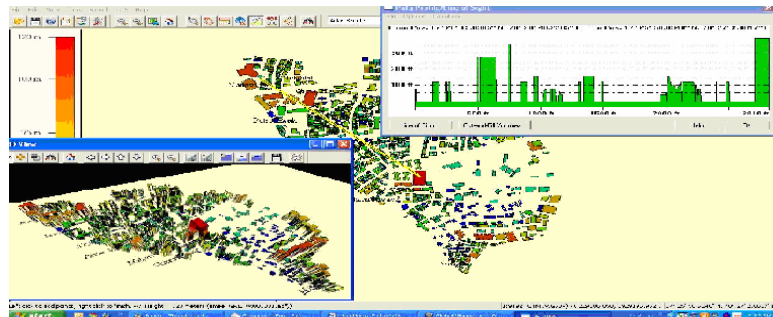
In telecom networking, the most important parameter for location of the signal towers are the building density data. The height of the buildings causes obstruction and loss of signal over a distance in urban areas. A digital city model is very helpful in planning the installation of signal towers.

The Challenge

Up to date, detailed and geographically accurate 3-D City models for major Indian Cities that assist the Telco's in signal propagation modeling and 3G planning.

The Solution

The high-resolution satellite imageries are used to capture building polygons. The ratio of the base and the top of the building gives a relative height data which can be multiplied with a factor based on the actual height of one building to determine the actual height for all the buildings. For more accuracy of the data will make field survey and give required attributes which can be used for planning.



LOS Coverage Report

For those buildings that are leased by the Wireless Carrier and are to be implemented as hubs, we undertake a detailed coverage analysis. The Coverage Report literally shows an antenna's-eye-view of path conditions. Consequently, the report enables the visual verification of LOS conditions from the office without the requirement for further field checks. This has the effect of dramatically reducing the amount of field survey time, and therefore lowers the cost typically associated with deployment.

Results

Output data consists of Path profile/Line of Sight reports, View shed analysis and reports can be exported any other formats for planning.

Learn more about Company at www.annova-tech.com