



Leading Infrastructure Company, India

Tracking and Weight Monitoring System

Keywords

- Implement fleet management solution and weight monitoring system
- Monitoring systems to track all vehicles when it is moved from one transfer station to another.
- Objective is to develop an integrated GIS-MIS-GPS- System as a tool for making decisions on investment in infrastructure facilities.
- The movement of vehicles would be monitored through internet using Track Versa Application.

Results

- MIS reports
- Day report
- Activity Report,
- Driver summary report,
- Fleet summary report

For More information



India office:

Annova Technologies Pvt Ltd
Ground Floor, Turning Point
Complex,
Greenlands, Hyderabad, AP 500073
Phone : +91-40-23737013

US office:

Annova Inc.
591 Camino de la Reina, Suite 200,
San Diego, CA 92108
Phone : +1-858-300-5513
Fax : +1-858-408-1997
Email: annova@annova-tech.com

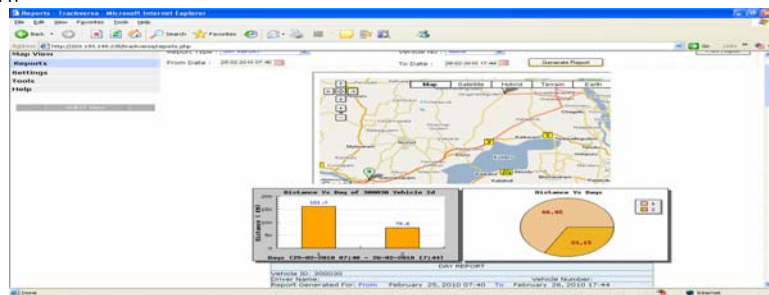
A major Infrastructure company is having number of heavy vehicles which will operates for construction activities and wanted to implement fleet management solution and Wight monitoring system at its outer ring road (ORR) construction site near shamshabad international airport.

The Challenge

Customer wanted to implement fleet management solution and weight Monitoring system at its outer ring road (ORR) construction site near Shamshabad international airport. We and weight monitoring system to track all vehicles engaged at the construction site and to monitor proposed an integrated fleet management weight of construction material when it is moved from one transfer station to another. The main objective was to develop an Integrated GIS-MIS-GPS System as a tool for making decisions on investment in infrastructure facilities. Make it as an effective & efficient mechanism for fleet management and weight monitoring. Maximize all the infrastructure facilities used.

The Solution

The basic idea is to install vehicle tracking devices in all vehicles used at ORR construction site to track vehicle movement. A fixed/variable route map will be assigned to each vehicle to follow while transferring material from one site to another in the assigned route. The movement of vehicles would be monitored through internet using Track Versa Application. Track Versa application would also generate various MIS reports such Day report, Activity Report, Driver Summary report, Fleet Summary report and Ignition report. The WMS (Weight Monitoring System) will record / monitor the weight of material when it is moved from one transfer station to another transfer station.



Results

Output data consists of Application would Also generate MIS reports, Day report, Activity Report, Driver summary report, Fleet summary report etc.