



# Soil Mapping

## Classification of soils using Geo referenced Topo sheets

### Keywords

- Soil mapping, is the process of classifying soil types and other soil properties in a given area and geo encoding such information
- It applies the principles of soil science, geomorphology
- Analysis of vegetation and land use patterns supported by Topo sheets and remote sensing.

### Results

- The output data consists of polygon shape files of soil along with attributes.

For More information



#### India office:

Annova Technologies Pvt Ltd  
Ground Floor, Turning Point  
Complex,  
Greenlands, Hyderabad, AP 500073  
Phone : +91-40-23737013

#### US office:

Annova Inc.  
591 Camino de la Reina, Suite 200,  
San Diego, CA 92108  
Phone : +1-858-300-5513  
Fax : +1-858-408-1997  
Email: annova@annova-tech.com

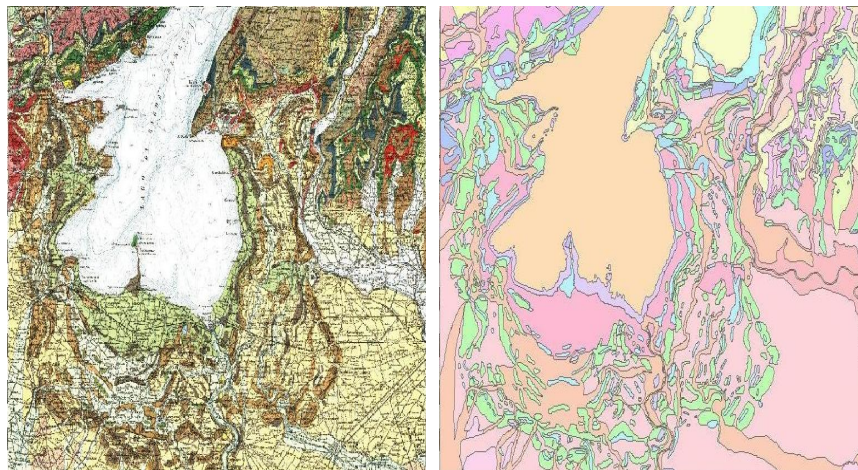
*AIR Worldwide Inc is looking soil mapping for few countries for their Insurance and Risk assessment Model by using geo-referenced toposheets.*

### The Challenge

Soil mapping, is the process of classifying soil types and other soil properties in a given area and geo encoding such information. It applies the principles of soil science, and draws heavily from geomorphology, theories of soil formation, physical geography, and analysis of vegetation and land use patterns supported by Topo sheets and remote sensing.

### The Solution

The entire digitization is being done using CAD/GIS software; the data layers captured as polygon layer for soil types. Polygon topology is being checked and assigned all required soil attributes.



### Results

The output data consists of polygon shape files along with attributes.

Learn more about Company at [www.annova-tech.com](http://www.annova-tech.com)